

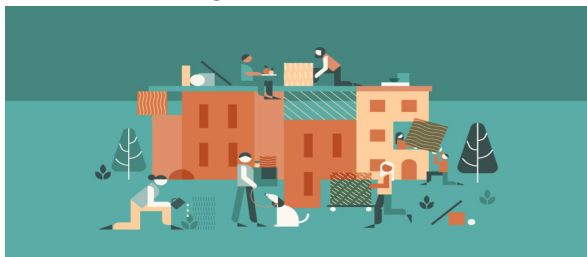
Corner Brook Status of Women Council

NEWSLETTER - February 2021

Social Enterprise

For the past year, the Corner Brook Status of Women Council has been engaged in a research project focused on creating a Social Enterprise, specifically in the Crestview area, but something that the whole City can avail of. But what is a social enterprise and what would it look like here in Corner Brook?

A Social Enterprise, in its most basic definition, is a business that is run by an organization or persons, and its goal is to generate profit that will all go back into the business, and the community it serves. The mission of a Social Enterprise is not to solely make money. It is focused on social, cultural, economic, or environmental change within its community, and society at large.



The research project that has been ongoing here, was initially to determine if a Social Enterprise, of any sort, would be feasible in this city to undertake and be sustainable. Through various research, community surveys, and discussion; it was decided that a Social Enterprise could work and would be valuable. Through the information gained, many residents indicated the desire for a number of types of business. However, many of these were already available in the city in some form. The main issue that kept coming up was transportation. Transportation kept putting up

roadblocks for people to move around efficiently and enjoy what the city has to offer.

So, now here we are. A community transport model is being investigated. A means to ensure low-income residents, and those who avail of community services, are able to navigate the city and their days effectively and efficiently, just like those who have personal vehicles can. The goal of our newly designated Social Enterprise model is movement; in generating a way for people to get to jobs, doctor appointments, community group events, to get groceries, and socialize with less worry about deciding between paying for transportation or buying milk. This Social Enterprise will work to help reduce transportation poverty, expand opportunities, and improve social concerns for residents by enabling them to pay less for transportation while having a reliable service, and using those savings to engage in their community more. A community transportation system such as what we are developing has been shown to enable economic, social, wellbeing and educational improvements in the lives of users, and has also been shown to help local businesses and organizations in gaining customers and engaging with them. We see this project as a necessity, and a benefit, to the residents of Corner Brook and hope you will join us in making it a success.

Upcoming:

We are loving our new Feminist Book Club. This month's book is *Secret Daughter* by Shilpi Somaya Gowda. The virtual meeting will be 7pm, Tuesday, February 9th. Call us for more details, there is still time to join.

In Newfoundland February is Violence Prevention month. Through the Violence Prevention Initiative, government and community partners are taking action needed to reduce the many types of violence in our

province. Violence in any form is never acceptable.

Nationally, February is recognized as Heart & Stroke month. Cardiovascular issues continue to be the leading cause of death for both men and women in Newfoundland.

Every February, Canadians are invited to participate in Black History Month festivities and events that honour the legacy of Black Canadians, past and present.

Tuesday, February 2nd - Groundhog Day. I'm not sure when winter will end but rest assured this year in Corner Brook at least we will have a short winter as it has yet to start.

Friday, February 12th - Sexual and Reproductive Health Awareness Day. This year's theme is: Youth Friendly Care: it's your right.

Friday, February 12th - Fresh Air, Fun and Fitness Friday - The Corner Brook Status of Women Centre is pleased to send you on a one day cross country ski or snowshoeing outing. Space is limited, call 639-8522 to register.

Saturday, February 13th - Wear Red for Women's Heart Health is an initiative of the Heart and Stroke Foundation to bring awareness to the fact that cardiovascular disease is the leading killer of women as well as men.

Saturday, Feb 13th - Election Day. Get out and vote. To find out where your voting station is or how to vote early, check out <https://www.elections.gov.nl.ca/elections/>

Sunday, February 14th - Valentine's Day. Don't forget to spend some time with someone special. No sweetheart, no problem, you are special, take some time to spoil yourself.

Tuesday, February 16th - Pancake Day. The Community Coalition on Housing and Homelessness has for years celebrated pancake day with a pancake fundraiser. Due to covid changes were required this year and <https://www.facebook.com/groups/bestinthewestcompetition> was formed. Be sure to check it out!

Wednesday, February 17th - Random Act of Kindness Day. 2020 was rough on everyone, a smile, a complement, or a cup of tea might be all it takes to change someone's day.

Monday, February 22nd - Corner Brook Civic Holiday. Our office will be closed on this day.

Wednesday, February 24th - Pink Shirt Day (Anti-bullying). The aim is to "*lift each other up*" and support programs that encourage healthy self esteem and teach empathy, compassion and kindness.

The Final Word:

Sadly, violence is a common occurrence in our community. Too often people suffer in silence thinking it is their fault, but it is not. Violence in any form is unacceptable. No one deserves to be hurt by the various forms of violence. It is always the choice of the individual who uses violence to act in this way.

There is help available, including from the staff of the Corner Brook Status of Women Council. Please reach out for help if you are living with violence. We will work with you to develop a plan that works for you.

February is Violence Prevention Month in Newfoundland and Labrador. Throughout the month, you will see us post awareness information and videos on our social media to help people understand the many ways in which violence exists in our community and where to get support and help.

